

ARVEY E-Fill Home 300

Compact solar panel - no mounting

Generate your own electricity and consume it directly at home

The highly effective 300 Wp solar panel paired with a compact solar inverter of the highest quality provides your home with free, clean energy. No complex installation is needed - plug and play into the power socket and produce your own electricity. The panel can be installed or set up anywhere and aligned to the sun. The electricity produced reduces your electricity costs and is good for the environment. With the addition of a battery storage, you can use the energy produced at other places or in the evening when the sun is no longer shining.



Inverter

Input (DC)

Max. PV power	380 W
---------------	-------

Output (AC)

Max. AC power	333 W
---------------	-------

Nominal power	300 W
---------------	-------

Max. AC power	1.45 A
---------------	--------

AC nominal Power	1.3 A
------------------	-------

Power factor at nominal power	> 0.99
-------------------------------	--------

Efficiency

Max. Efficiency	96.70%
-----------------	--------

Protection

Anti-islanding protection	Yes
---------------------------	-----

AC short circuit protection	Yes
-----------------------------	-----

Over voltage protection	Yes
-------------------------	-----

Over current protection	Yes
-------------------------	-----

Over heat protection	Yes
----------------------	-----

General Data

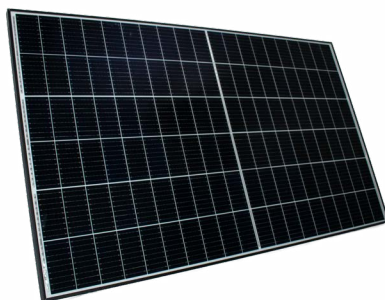
Weight	1.98 kg
--------	---------

Cooling concept	Natural Convection
-----------------	--------------------

Operating temperature	-40 °C to +85 °C
-----------------------	------------------

IP class	IP67
----------	------

ARVEY E-Fill Home 300



Panel

Electrical Data

Rated power (PMPP)	max. 380 W
Rated voltage (UMPP)	34,49 V
Rated current (IMPP)	11,02 A
Short-circuit current (ISC)	11, 53 A
Open circuit voltage (UOC)	41,72 V
Module efficiency	20,86%

Construction

Front	3,2 mm tempered, low-reflection white glass
Cells	monocrystalline high-performance cells
Back	composite film
Frame	35 mm aluminium frame

Mechanical Data

L x B x H	ca. 1755 x 1038 x 35 mm
Weight	ca. 19,5 kg

Limits

Permissible operating temperature	-40 °C to +85 °C
No ext. voltages greater than Uoc may be applied to the module	

SCENARIOS

rented apartment
balcony
dwelling
garage
garden shed
moving
...

OPT. ACCESSORIES

AC connection cable (Wieland or Schuko)
Coupling cable
VDE compliant socket set
Stand (balcony, plain)
ARVEY E3 or E5
ARVEY Clean & Protect
...

Info:

AXSOL's power generation and storage systems can be ideally configured for any application due to their modular design and are customized. Send an [inquiry to info@axsol.eu](mailto:info@axsol.eu) with your desired requirements and we will make you an offer.

